

www.Akfix.com

Wood Flooring *Products*



Creates Permanent Solutions



CREATES PERMANENT SOLUTIONS

EXPORTING TO MORE THAN
100+
COUNTRIES


450
DIFFERENT PRODUCTS


**EXPORT
CHAMPION**
OF TURKEY FOR
ADHESIVE & GLUES

Akfix[®]
MASTER OF SOLUTIONS

 /Akfixsealants

www.Akfix.com



Scan QR code for product video.



HB260

HYBRID FLOORING ADHESIVE (WOOD & PARQUET)

Single component universal elastic flooring adhesive based on hybrid technology. Thanks to hybrid technology it is solvent, isocyanate and water free. It provides exceptional performance on strips and mosaic parquet, plank floors and wood block floors on porous and non-porous substrates.

- Eco Friendly
- Excellent Elasticity
- Solvent Isocyanate Water Free

Application Areas

Suitable for bonding many different types of floors including strips and mosaic parquet, plank floors and wood block floors on porous and non-porous substrates.

Features

Ready to use: No mixing required. Provides high quality indoor air; Non-toxic, Eco-friendly. Form stable peaks when applied by a notched trowel. Suitable for under-floor heating systems. Permanently flexible. Rapid buildup of final bonding strength. Solvent, Isocyanate and water free. Very easy to apply.

Technical Properties

Chemical Base	: Hybrid Polymer
Curing System	: Moisture
Density	: 1.46 ± 0.003 g/ml
Appearance/Color	: Homogeneous paste / Beige
Skin formation time	: 40±10 (23 °C, 50%R.H.)
Curing Rate	: Min. 2,5 mm/day (23 °C, 50%R.H.)
Sagging (ISO 7390)	: None
Shore A Hardness (ISO 868)	: 40-50
Elongation at Break % (ISO 37)	: Min. 150%
Volume Loss (EN ISO 10563)	: < 3%
Tensile Strength (ISO 37)	: Min. 1,5 N/mm ²

Package

Stock Code	Type	Volume	Box
AHB60	Beige	600 ml	12
AHB2608	Beige	8 kg.	1
AHB2615	Beige	15 kg.	1





HB262

HYBRID WOOD FLOORING ADHESIVE

single component universal elastic flooring adhesive based on hybrid technology. Thanks to hybrid technology it is solvent, isocyanate and water free. It provides high performance on strips and mosaic parquet, plank floors and wood block floors on porous and non-porous substrates.

- Strong Initial Adhesion
- Stable & Elastic Adhesive
- Long Open Time

Application Areas

Suitable for bonding many different types of floors including strips and mosaic parquet, plank floors and wood block floors on porous and non-porous substrates.

Features

Ready to use: No mixing required. Cost effective. Non-toxic, eco-friendly. Form stable peaks when applied by a notched trowel. Suitable for under-floor heating systems. High bonding strength. Solvent, Isocyanate and water free. Very easy to apply.

Technical Properties

Curing System	: Moisture
Density	: 1.56 ± 0.003 g/ml
Appearance/Color	: Homogeneous paste / Beige
Skin formation time	: 50±10 (23 °C, 50%R.H.)
Curing Rate	: Min. 2,5 mm/day (23 °C, 50%R.H.)
Sagging (ISO 7390)	: None
Shore A Hardness (ISO 868)	: 40-50
Elongation at Break % (ISO 37)	: Min. 150%
Volume Loss (EN ISO 10563)	: < 3%
Tensile Strength (ISO 37)	: Min. 1,2 N/mm2

Package

Stock Code	Type	Volume	Box
AHB62	Beige	600 ml	12
AHB2628	Beige	8 kg	1
AHB2625	Beige	15 kg	1



PU ADH 305

RUBBER TILE AND PARQUET ADHESIVE

Two component, solventless, polyurethane based rubber tile and parquet adhesive. It is specially designed for rubber tile and wood bonding to concrete surfaces. It is resistant to salt water and most chemicals. Easy applicable, durable and elastic adhesive for various substrates.

- High Bonding Strength
- Solvent Free
- Durable

Application Areas

Bonding all types of parquets. Bonding artificial grass sports ground applications. Bonding rubber sheets to different surfaces such as; concrete, hardboard, chipboard. Bonding metal, ceramic, concrete, wood etc.

Features

Two component. Excellent bonding to applied surfaces. Suitable for use in adverse weather conditions. Solvent free. No smell. Flexible. Durable.

Technical Properties

Appearance	: Beige or any desired color
Viscosity (cps)	: Thixotropic
Density (25 °C) (gr/cm ³)	: 1,8 (A component)
	: 1,2 (B component)
Solids (%)	: 100
Mix ratio	: 9/1: A/B (by weight)
Open time (min)	: 40-50 (at 23°C 50% R.H.)
Tack free time (hr)	: 2-3 (at 23°C 50% R.H.)
Film resistance	: Water and heat resistant
Covarage (kg/m ²)	: 0,9-1,1 (1 mm thickness)

Package

Stock Code	Type	Volume	Box
ADH3018	Beige+Brown	20 kg. set (18 + 2 kg)	1



PU ADH 315

RUBBER TILE AND PARQUET ADHESIVE

Two component, solventless, polyurethane based rubber tile and parquet adhesive. It is specially designed for rubber tile and wood bonding to concrete surfaces. It is resistant to salt water and most chemicals. Easy applicable, durable and elastic adhesive for various substrates.

- Excellent Bonding Strength
- Interior and Exterior Applications
- Long Working and Gel Time

Application Areas

Bonding all types of parquets. Bonding artificial grass sports ground applications. Bonding rubber sheets to different surfaces such as; concrete, hardboard, chipboard. Bonding metal, ceramic, concrete, wood etc.

Features

Two component. Excellent bonding to applied surfaces. Suitable for use in adverse weather conditions. Solvent free. No smell. Flexible. Durable.

Technical Properties

Appearance	:Beige or any desired color
Viscosity (cps)	:Thixotropic
Density (25 °C) (gr/cm ³)	:1,72 (A component) 1,2 (B component)
Solids (%)	:100
Mix ratio	:7/1: A/B (By weight)
Open time (min)	:25-40 (at 23 °C 50% R.H.)
Tack free time (hr)	:1-2 (at 23 °C 50% R.H.)
Film resistance	:Water and heat resistant
Coverage	:(kg/m ²) 0,9-1,1 (1 mm thickness)

Package

Stock Code	Type	Volume	Box
ADH3221	Green+Brown	24 kg. set (21 + 3 Kg)	1



PU ADH 325 ARTIFICIAL GRASS ADHESIVE

Two component, solventless, self leveling, polyurethane based adhesive designed for installation of artificial grass. It is resistant to water, moisture and corrosive materials. Suitable for use in adverse weather conditions.

- Excellent Bonding Strength
- Interior and Exterior Applications
- Flexible & Durable

Application Areas

Bonding artificial grass sports ground applications. Bonding rubber sheets to different surfaces such as; concrete, hardboard, chipboard. Bonding metal, ceramic, concrete, wood etc.

Features

Two component. Excellent bonding to applied surfaces. Suitable for use in adverse weather conditions. Solvent free. No smell. Flexible. Durable.

Technical Properties

Appearance	: Green or any desired colour
Viscosity (cps)	: Thixotropic
Density (25 °C) (gr/cm ³)	: 1,52 (A component)
	: 1,2 (B component)
Solids (%)	: 100
Mix ratio	: 5/1: A/b (By weight)
Open time (min)	: 25-40 (at 23°C 50% R.H.)
Tack free time (hr)	: 1-1,5 (at 23°C 50% R.H.)
Film resistance	: Water and heat resistant
Covarage (kg/m ²)	: 0,9-1,1 (1 mm thickness)

Package

Stock Code	Type	Volume	Box
ADH3215	Green+Brown	18 kg. set (15 + 3 kg)	1



FL205 PVC FLOORING ADHESIVE

Akfix FL205 PVC Flooring Adhesive is a one part, water borne acrylic based adhesive that is used for adhesion of PVC/Vinyl floorings and tiles, heterogeneous PVC, expanded vinyl, semi-flexible floor tiles and felt-backed carpets to the floor.

- Strong Initial Adhesion
- Stable & Elastic Adhesive
- Long Open Time

Application Areas

Concrete, sand/cement screeds. Smoothened sub-floors. Subfloors composed of wood materials. For Interior use only. Use only horizontal surface.

Features

Single component, no mixing required. Solvent-free, very low emissions. Easy to apply. Long open time. Strong initial adhesion power. Stable and elastic adhesive. Suitable for use of wheelchair and rubber-wheeled vehicle traffic. Suitable for installation on under-floor heating systems.

Technical Properties

Chemical Base	: Acrylic Dispersion	
Density	: 1.44 ± 0.03 g/ml	
Color	: Grey	
Waiting Time	: 5-10 min.	(20°C and 50% R.H.)
Working Duration	: 35-45 min.	(20°C and 50% R.H.)
Set to Traffic	: 18-48 h	(20°C and 50% R.H.)
Full Setting	: 48 h	
Application Temperature	: +5°C to +35°C	

Package

Stock Code	Type	Volume	Box
FL205	Plastic Bucket	20kg	1
FL205.1	Plastic Bucket	5kg	1



Scan QR code for product video.

966P SUBFLOOR PU ADHESIVE

One-component, premium, polyurethane-based new generation adhesive formulated for floor joists, subflooring, trusses, particle board, OSB and decks. Subfloor Adhesive provides superior adhesion to lumber, plywood, concrete, metals, masonry and other substrates even if they are frozen or slightly damp.

- High Yield
- Extremely Strong Bonding
- Weather Resistance

Application Areas

Many construction application on lumber, plywood, concrete, metals, masonry, steel, metals, fiberglass and more. Bonding floor joists, subflooring, trusses and other wood floor sheathing.

Features

Its revolutionary high yield – replaces up to 25 standard 280 ml cartridges of traditional caulk adhesive. Extremely strong bond. Adheres to dry, wet, treated and frozen lumber. Reduces nail pops, call backs and squeaks. Saves application time and money. Provides thermal and sound insulation.

Technical Properties

Basis	: Polyurethane Prepolymer	
Curing System	: Moisture Cure	
Tack-Free Time	: 5-8 min	(ASTM C1620)
Cure-Time	: 24 hours	
Foam Color	: Light Yellow	
Metric yield	: 120 meters in (1.3 cm) bead	
Shelf life	: 12 months	
Fire Class of the Cured Foam	: B3	(DIN 4102-1)(EN 13501-1)
Shear Bond Strength	: >12 MPa	
Temperature Resistance	: -40°C to +90°C	
Application Temperature	: +5°C to +30°C	

Package

Stock Code	Type	Volume	Box
FA095	Summer +5	Gw. 570 g.	12
FA096	Summer +5	Gw. 850 g.	12



Scan QR code for product video.

310 MONTAGE ADHESIVE WATER BASED PAINTABLE

Water-based adhesive used for bonding numerous building materials. It is particularly suitable for DIY users due to solvent-free content and high bonding strength.

- Eco-Friendly, Solvent Free
- Particularly Suitable For Rough Surfaces
- For Both Indoor And Outdoor Applications

Application Areas

Bonding materials such as wood, non-polished stones, concrete, plaster, tiles, panels, synthetic building materials etc. Mounting wooden construction elements, wood and plaster panels, plaster ornaments. Mounting decorative wooden trimmings. Repairing cracks in plaster. Quick repairs on walls and plaster. Suitable surfaces: MDF, particleboard, wood, polystyrene foam, concrete, masonry, tile, ceramic, stone, plasterboard.

Features

Acrylic dispersion based. Good gap - filling capacity on rough surfaces. Suitable for both indoor and outdoor applications. Weatherproof. Paintable. Low odour. Solvent-free.

Technical Properties

Basis	: Acrylic dispersion		
Density	: 1.40 ± 0.03 gr/cm ³	(ASTM D 1875)	
Tack-Free Time	: 30-40 minutes (at 25 °C and %50 R.H.) (ASTM C 679)		
Curing Rate	: 1-2 mm/day (at 25 °C and %50 R.H.)		
Temperature Resistance	: -10°C to +80°C		
Application Temperature	: +5°C to +40°C		
Maximum Shear Strength (beech-beech)	: > 40 kgf/cm ²		
After 6 hours	: > 40 kgf/cm ²		
After 24 hours	: > 70 kgf/cm ²		

Package

Stock Code	Type	Volume	Box
GA200	Cartridge	310 ml	24
GA205	Plastic Tube	250 ml	36
GA201	Plastic Bucket	1 kg	6
GA225	Plastic Bucket	25kg	1
GA820	Sousage Aluminium Foil	80 ml	36



ECO Friendly





SELF LEVELING HYBRID SEALANT

One-component self-leveling, silane modified polymer based sealant ideal for horizontal applications. Its elasticity allows it to absorb continual movements of the structure caused by thermal changes without problems of cracking.

- UV And Weather Resistance
- High Adhesion Strength
- Very Low Voc Content

Application Areas

Used for sealing of horizontal joints. Waterproofing applications. Interior and exterior areas. Expansion joints between many different construction materials. Control joints. Driveways/ Garages. Sidewalks. Pool decks.

Features

One component, no mixing required. Self-leveling consistency, easily fills the cracks on the floor. Waterproof. Possesses permanent elasticity. High adhesion strength. Capable of ±20% joint movement. Paintable. Cures bubble-free. VOC-compliant.

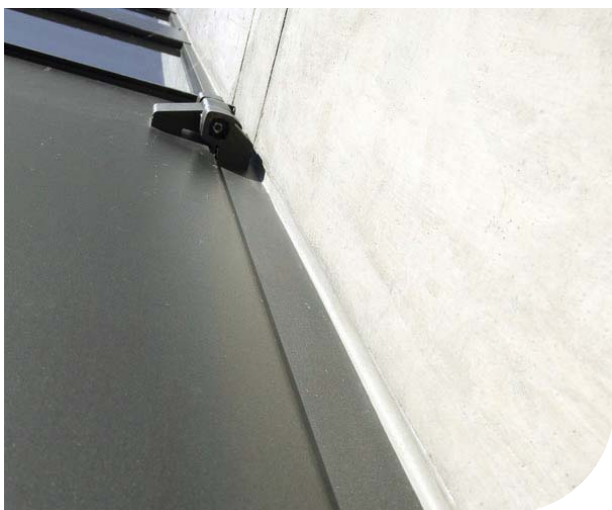
Technical Properties

Chemical Base	: Hybrid Polymer	
Curing Mechanism	: Moisture Curing	
Density	: 1.39 ± 0.03 g/ml	
Consistency	: Self-Leveling	
Skin Formation Time	: 25±5 min. (23°C and 50% R.H.)	
Tack Free Time	: 90±10 min. (23°C and 50% R.H.)	
Curing Rate	: Min. 2.50 mm/day (23°C and 50% R.H.)	
Shore A Hardness	: 25±5	ISO 868 (After 28 days)
Elongation at Break	: >300%	ASTM D412
Tensile Strength	: 0.75-1.5 N/mm ²	ASTM D412
Application Temperature	: +5°C to +35°C	

Package

Stock Code	Type	Volume	Box
AST25	Concrete Gray	290 ml	12
AST25.1	Concrete Gray	600 ml	12
AST25.2	Concrete Gray	825 ml	6





Scan QR code for product video.



P635

POLYURETHANE SEALANT CONSTRUCTION

One part, high quality, low modulus, construction sealant based on non-bubbling polyurethane technology. Its unique formulation makes the product best choice for sealing applications such as combination of different materials with different surface properties and thermal expansion coefficients.

- Low Modulus
- Paintable
- 25% Movement Capability

Application Areas

Expansion joints between many different construction materials. Movement and connection joints in floors. Indoor and outdoor applications for pedestrian and traffic areas. Joints between prefabricated construction materials. Sealing and bonding of ventilation ducts, gutters and spouts etc. For expansion joints between pre-cast concrete panels. Meets the requirements of ISO 11600 F 25 LM.

Features

Possesses permanent elasticity. No sagging – Thixotropic. No surface tackiness after full cure. Do not pick up dirt. No shrinkage. Enhanced storage stability. Can be applied with hand gun and tooled easily. Paintable. Cures bubble-free. 25% movement capability. Conforms to BS 6920 for the metallic water soluble impurities. Conforms to the requirements of VOC content specifications in LEED credit EQc4.1 “Low-emitting products” of SCAQMD rule 1168.

Technical Properties

BEFORE CURING

Basis	: Polyurethane
Consistency	: Thixotropic
Curing Mechanism	: Moisture Curing
Density	: 1,20±0,03 g/ml
Tack free time	: 30-70 min. (23°C and 50% R.H)
Curing Rate	: Min. 2,5 mm/day (23°C and 50% R.H)
Sagging	: 0 mm (EN ISO 7390)
Temperature Resistance	: -40°C to +90°C
Application Temperature	: +5°C to +40°C

AFTER CURING

Hardness Shore A	: 35 ±5 After 28 days (ASTM C661)
Paintability	: Yes *
Elastic Recovery	: ≥ 70% (ISO 7389)
Elongation at break	: ≥ 100% (ISO8339)
E100 Modulus (23 °C)	: 0.35-0.40 N/mm ² (ISO8339)
E100 Modulus (-20 °C)	: ≤ 0,60 N/mm ² (ISO8339)

DUMBLE TEST

Elongation at break	: ≥%600 (ASTM D412)
Tensile Strength	: 1.5-2.0 N/mm ² (ASTM D412)

Package

Stock Code	Type	Volume	Box
AA112	White	310 ml	12
AA113	Black	310 ml	12
AA116	Grey	310 ml	12
AA114	Agate Grey	310 ml	12
AA119	Signal Brown	310 ml	12
AA662	White	600 ml	12
AA663	Black	600 ml	12
AA666	Grey	600 ml	12
AA664	Agate Grey	600 ml	12
AA669	Signal Brown	600 ml	12

Conforms to BS 6920 for the metallic water soluble impurities and is suitable for use in drinking water systems.

SHORE A35





907N

EPDM SILICONE SEALANT

One component, neutral curing, high performance silicone sealant specially developed for bonding and sealing of EPDM sheets.

- Good Adhesion
- Weather Resistance
- High Elasticity

Application Areas

Bonding of EPDM sheets to each other. Sealing between EPDM sheets and many different building surfaces.

Features

Moisture curing. Very good adhesion on porous and nonporous surfaces including EPDM. Resistance to weather conditions. Fast curing. High elasticity. %100 Silicone, solventless

Technical Properties

Basis	: Silicone Polymer(Oxime)
Curing System	: Neutral
Density	: 1.20± 0.03 g/ml (ASTM D 792)
Hardness Shore A	: 25±5 (after 28 days)
Tensile Strength	: ≤ 0,4 N/mm ² (23°C and 50% R.H) (ISO 8339)
Skin formation	: 5-10 min. (23°C and 50% R.H)
Curing Rate	: Min. 2,5 mm/day (23°C and 50% R.H)
Elongation At Break	: ≥ 350%
Elastic Recovery	: Approx. 100% (ISO 7389)
Sagging	: 0 mm (ISO 7390)
Yield	: Approx. 12 meters (600 mL) for 0.64 cm bead size
Temperature Resistance	: -60°C to +180°C
Application Temperature	: +5°C to +40°C

Package

Stock Code	Type	Volume	Box
SA863	Black	600 ml	12

Akfix®

■ MASTER OF SOLUTIONS ■

Wood Flooring Products

www.Akfix.com

    /Akfixsealants

